



European Trail
Orienteering
Championships
Slovakia

BULLETIN 4

April 2018

WWW.ETOC2018.SK

Contents

Welcome by the Chairman of the SLOVAK ORIENTEERING ASSOCIATION	4
Welcome by the Event Director	5
Venue	6
Organising team, Competition rules, Training possibilities	7
Event programme	8
Entries, Accreditation and entry fees, Escorts	9
List of entries	10
Participation, Catering, Transport, Traffic, VISAS	11
Event Centre, Media, Public competition	12
Team Official Meetings, Climate, Clothing, Hazards, Start number bibs, Punching	13
Embargoed areas	14
Ceremonies, Zero tolerance	15
Terrain and maps	16
Solution maps, Special procedures	18
Complaints and Protests, Jury, Quarantine, Equipment	20
Model first part (Friday April 27)	21
Model second part (Friday April 27)	23
PreO day 1 (Saturday April 28)	25
PreO day 2 (Sunday April 29)	27
Relay (Monday April 30)	29
TempO (Tuesday May 1)	32
Organisers, Sponsors, Partners	35

info@etoc2018.sk
www.etoc2018.sk
www.facebook.com/etoc2018
+421 908 226 250

Welcome by the Chairman of the SLOVAK ORIENTEERING ASSOCIATION



Welcome,

On behalf of the Slovak Orienteering Association, a warm welcome to Slovakia and to Bratislava and its surroundings for the European Trail Orienteering Championships 2018!

We are thankful to the IOF for providing us with the responsibility to organise this important event, and we are ready to prepare as nice, demanding and exciting events as possible. The core organisers are our best Trail O athletes – Jan and Dušan Furucz, Marian Mikluš and many others. Their experience, supported by the IOF Adviser and other helpers, should guarantee not only the technical but also the social quality of the event.

The Slovak Orienteering Federation is one of the smaller IOF members, with about 500 active orienteers in total, most of them involved only in foot orienteering. However, small can be effective – both from the point of view of results and of organising. The Trail O European Championships is the highest-level event so far organised by our federation in this discipline. However in other disciplines many still may remember MTBO World Championships in Donovaly, Foot O Junior World Championships and Students World Championships in Košice, recent European Youth Championships in Banská Bystrica and SkiO Junior World Championships in Tajov and Donovaly. All these events were major successes and we will do our best to continue in such tradition.

We hope that in the year 2018 both the orienteers and spectators will have an unforgettable and amazing experience with the European Trail Orienteering Championships!

Juraj Nemec

Welcome by the Event Director



Dear orienteering friends,

I would like to welcome all competitors, officials and guests, on behalf of the Organising Committee and orienteering club Slávia Farmaceut Bratislava, to the European Trail Orienteering Championships 2018 in Slovakia.

The Slovak Orienteering Association has great experiences with organising some important events in the past. These include the Junior World Orienteering Championships 2012 in Kosice, World University Orienteering Championships 2006 in Kosice, Orienteering World Cup in years 1988 (Silická planina) and 1998 (Tatranská Lomnica), European Youth Orienteering Championships 2003 in Pezinok, Junior World Ski Orienteering Championships 2000 in Banská Bystrica, Junior World Ski Orienteering Championships 1996 in Banská Bystrica and World Mountain Bike Orienteering Championships 2005 in Banská Bystrica. The European Youth Orienteering Championships in 2017 were also held in Banská Bystrica. You can meet some people from these events in year 2018 too.

Trail Orienteering is a relatively new discipline in Slovakia, but has quickly acquired importance similar to other orienteering disciplines. The first competition on Slovak territory took place during the Slovak championships in Sprint (organized by our club) on 13 September 2008 and it was prepared by the Hungarian federation. We had to wait a long time for the next TrailO competition. The first competition organised by a Slovak club on Slovak territory was a local competition with 47 participants, organised by our club on 25 January 2014. We started a very close cooperation with the Czech federation and our skills and experience grew widely. The club TJ Slávia Farmaceut Bratislava has organised 9 national TrailO competitions (7 with international participants) and two ECTO competitions in Slovakia during the last three years. We organised three TrailO competitions in the Czech Republic last year too.

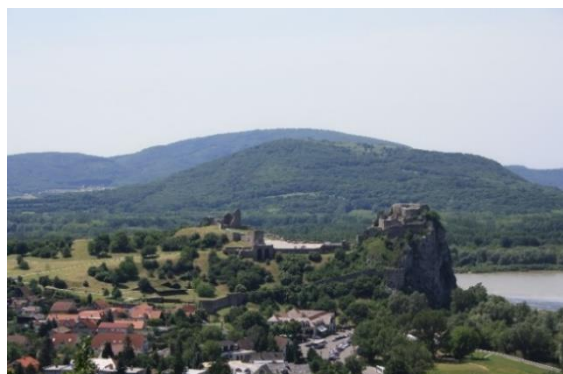
Our goal is to prepare a fair and nice competition with the possibility to explore beautiful and interesting places in Slovakia. I would like to apologise for the fact that you may face slightly higher requirements for travelling, but each competition will be held in a different type of terrain with great demands on TrailO skills. You will meet flat land, hilly and steep slopes, and different vegetation, mostly in non-urban areas. We will pay special attention to Paralympic competitors by selecting asphalt or another firm surface on most of competitions and paths.

The European Trail Orienteering Championships 2018 will be held in the beautiful capital of Slovakia, a small town named Bratislava, and its neighbourhood. Bratislava is famous for unique architecture, culture, history tradition, art, drinks, food and nightlife.

I wish all of you a lot of success and good preparations for our event in year 2018. I assure you that we will prepare this event on the highest possible level.

Dušan Furucz

Venue



The European Trail Orienteering Championships 2018 will be held in Bratislava, the capital of Slovakia, and its neighbouring areas - the Záhorie lowlands and the Little Carpathian mountains.

The lowland Záhorie is a very flat region in western Slovakia between the Little Carpathians mountains to the east and the river Morava to the west. This area is well known for its sandy dunes covered by pine forest, and large military training areas.

The Little Carpathians are a relative low and narrow mountain range with very diverse relief. They are part of the Carpathian Mountains. The mountains begin in Bratislava and continue about 100 km to the north. This territory is largely covered by deciduous forests with beech, common ash, sycamore, maple and linden.

Bratislava is the political, cultural and economic centre of Slovakia with a population of about 450,000 inhabitants and located in south-western Slovakia, at the junction of the rivers Danube and Morava. Bratislava is very close to two other countries, Austria and Hungary. Bratislava is historically tied with these countries and during a long history it was a significant economic, cultural and political centre of Central Europe. You can find a lot of unique architecture, culture, history, tradition, art, drinks, food and nightlife in this "small" city.

The individual races will be held in different municipalities. Borský Mikuláš, Devín (Bratislava), Plavecký Mikuláš and Stupava are small villages but with very beautiful and diverse nature. You can see the very flat forests change to rugged terrain forms or extremely steep slopes.

<http://www.visitbratislava.com>

<http://www.slovakiatouring.com>

Organising team

The event will be organised by members of the orienteering club "TJ Slávia Farmaceut Bratislava", with the support of the Slovak Orienteering Association. Main officers are:

Dušan FURUCZ	Event Director, Mapper, Course Setter
Ján FURUCZ	Course Setter
Ján MIŽÚR	Finances
Robert MIČEK	Mapper
Silvia SHAHZAD	Technical consultant for Paralympics, Accommodation
Jakub VALACH	Design
Ladislav KASZA	IT & Equipment
Petra KOTULIAKOVÁ	PR & Media
Ivan KOTULIAK	Logistics
Zuzana JANOTOVÁ	Catering, Protocol, Secretary
Zuzana FURUCZOVÁ	Office
Marcel FURUCZ	Human Resources and volunteers
Hana ŠMELÍKOVÁ	Start and Finish Area Manager
Ari TERTSUNEN (FIN)	IOF Senior Event Adviser
Marián MIKLUŠ	National Controller

Competition rules

The Competition Rules for IOF Trail Orienteering Events (valid from 1 January 2018) and the ETOC Rules (valid from 1 January 2016) shall apply to the European Trail Orienteering Championships 2018. A copy of the Rules is available for download from the Rules section on the official IOF website (www.orienteering.org).

There are no deviations from the Competition Rules.

Training possibilities

On request, the ETOC organisers can provide maps and opportunities for team preparation for the ETOC 2018 on similar or almost similar terrain.

More information about training possibilities are published on the [official ETOC website](#).

Event programme

Date	Time	Event	Location
Thursday, April 26	16:00	Event Office opens, arrivals	Bratislava
Friday, April 27	11:00	Model Events PreO	Plavecký Mikuláš
	12:00	Model Events TempO	Lakšárska Nová Ves
	12:00	PreO competition entry deadline	Lakšárska Nová Ves
	19:00	Team Officials Meeting	Bratislava
Saturday, April 28	10:00	PreO – Day 1	Stupava
	16:00	PreO - Public competition	Stupava
Sunday, April 29	10:00	PreO – Day 2	Plavecký Mikuláš
	16:00	PreO - Public competition	Plavecký Mikuláš
	16:30	Awards Ceremony	Plavecký Mikuláš
	18:00	Relay competition entry deadline	Bratislava
	19:00	Team Officials Meeting	Bratislava
Monday, April 30	10:00	Relay	Devín (Bratislava)
	12:00	TempO competition entry deadline	Devín (Bratislava)
	14:00	Relay course open for public	Devín (Bratislava)
	15:00	Opening Ceremony	Devín (Bratislava)
	15:30	Awards Ceremony	Devín (Bratislava)
	19:00	Team Officials Meeting	Bratislava
Tuesday, May 1 (National Holiday)	9:00	TempO – Qualification	Borský Mikuláš
	14:00	TempO – Final	Borský Mikuláš
	16:00	Awards Ceremony	Borský Mikuláš
	20:00	Closing Ceremony & Banquet	Bratislava
Wednesday, May 2		Departures	Bratislava

Entries

Final entries and payment of the entry fees must be made by March 19, 2018. Entries will not be valid until the entry fee has been paid. **All entries must be made through IOF Eventor.**

<https://eventor.orienteering.org/Events/Show/5539>

Competitors for the Paralympic class shall submit to the IOF, at least eight weeks before the competition, an eligibility form (available at www.orienteering.org) completed by a doctor. When approved, a certificate authenticating their Paralympic status will be issued. The eligibility certificate must be sent to the event organiser with the final entry form.

Confirmation of eligibility for Paralympic participants must be sent to the organisers by March 19, 2018.

The entry deadline for names of competitors for the individual competitions is at 12 noon on the day before competition (PreO - on Friday 27 April 2018, TempO on Monday 30 April 2018).

The entry deadline for three names of competitors for the Relay is at 18.00 hours on the day before competition (Sunday 29 April 2018).

The all changes have to be done over IOF Eventor.

Accreditation and entry fees

Accreditation fee for Athletes	80 €
Accreditation fee for Team Officials	100 €
Accreditation fee for Accompanying Persons	50 €
Entry fee for PreO	100 €
Entry fee for TempO	70 €
Entry fee for Relay	150 €

Account name:	TJ Slávia Farmaceut
Bank:	Slovenska Sporitelna
IBAN:	SK2709000000005110562760
BIC:	GIBASKBX

Final entries and payment of the entry fees must be made by March 19, 2018.

Escorts

The organisers will provide escorts ('pushers') on request during all competitions.

Final request for an Escort must be made by March 19, 2018.

List of entries

	Federation	Open	Paralympic	Official	Accompanying
	Croatia	6			
	Czech Republic	8	6		
	Denmark	4	1		1
	Finland	10	3	1	4
	Germany	3			
	Great Britain	6	2		1
	Hungary	3			
	Italy	7	4		1
	Japan	5			
	Latvia	6	4	2	
	Lithuania	6	3		
	Norway	6	3		
	Poland	6	6		
	Portugal	3	1		
	Russian Federation	5	6		
	Slovakia	7	1		
	Slovenia	3			
	Spain	3	3		
	Sweden	8	4		
	Ukraine	6	3	1	
	Total	111	50	4	7

Participation

Competitors representing member Federations of the IOF, defined by the International Paralympic Committee as belonging to the European continent, can compete in ETOC.

Competitors representing other member Federations of the IOF can participate in ETOC but will not be eligible for European titles, medals or diplomas.

In the individual PreO event a Federation may enter a maximum of 6 persons in each class. In the TempO event a Federation may enter a maximum of 8 persons. The current European Champion may be entered in their respective classes in addition to the normal maximum.

In the TrailO Relay a Federation may enter 2 teams in each class each consisting of 3 competitors. Only the better-placed team will count in the prize list.

Catering

Pre-ordered warm meals will be provided for lunch in the Competition Centres.

Tickets for meals will be given to the teams at their registration on arrival.

Transport

Teams, VIPs and the media representatives are free to use their own transport to all the events. There will be reserved parking areas at all the arenas.

Organised transport will not be provided, as there have been no requests for transport. We can help individually with special requests.

Traffic

We are expecting heavy traffic (traffic jams) on Friday afternoon on Bratislava exits due to the long weekend holidays (especially on the highway from Bratislava to Trnava, near the Event Centre). We do not expect any problems on competition days. There is possibility of heavier traffic on Thursday evening.

VISAS

According to the current regulations, citizens of some countries must obtain a visa in order to enter Slovakia.

Please check the following website for more information:

https://www.mzv.sk/web/en/consular_info/visa

Request for visas should be submitted at your nearest Slovakian Embassy. Please note that conditions of entry to Slovakia can change, and all ETOC participants are advised to keep up to date with the current situation by consulting their local Slovakia Embassy.

Event Centre

The main Event Centre will be open in hotel Vienna House Easy Bratislava as follows:

Thursday April 26	16:00 - 21:00
Friday April 27	18:00 - 20:00
Saturday April 28	N/A
Sunday April 29	17:00 - 20:00
Monday April 30	18:00 - 20:00
Tuesday May 1	18:00 - 19:00

Vienna House Easy Bratislava
Galvaniho 28
82104 Bratislava
Slovakia

Coordinates: 48.162422, 17.181984

Facilities for disabled guests. The entrance hall, special bedrooms, sanitary facilities and public rooms are accessible for wheelchairs. Re-charging of electric wheelchairs will be possible in special rooms.

The temporary Event Centres will be in competition arenas:

Friday April 27	Lakšárska Nová Ves (community centre)	10:00 - 15:00
Saturday April 28	Stupava (pension Intenziva)	8:00 - 9:00, 13:00 - 15:00
Sunday April 29	Plavecký Mikuláš (community centre)	8:00 - 9:00, 13:00 - 15:00
Monday April 30	Devín (community centre)	8:00 - 9:00, 13:00 - 15:00
Tuesday May 1	Borský Mikuláš (community centre)	7:00 - 8:00, 11:00 - 16:00

Media

We would like you to be aware that you may be recorded by marshals, by official photograph, active and passive cameras. We plan to publish some photos, online and offline videos from the terrain (TCs, last, second-last TempO stations, etc.) and from medal ceremonies.

Public competition

Open Public events will be held during ETOC on the same or similar courses, on the same days, after ETOC competition. The whole event includes two PreO competitions (ETOC Day 1 + Day 2) and two individual trainings on ETOC courses (Relay and TempO). You can find more information on [ETOC pages](#).

Team Official Meetings

The Team Official Meetings will be held in Event Centre hotel Vienna House Easy Bratislava (48.162422, 17.181984) in room 'Allegro'. Access to TOMs is permitted only for dedicated persons with mark TOM on their accreditations. Any exceptions shall be approved by the IOF Event Adviser.

Climate

The climate in Bratislava is continental. The usual day temperature at the end of April is between 10 and 15 degrees Celsius. The weather and climate in the spring can be very variable.

We are expecting day temperature between 15 and 27 degrees Celsius during ETOC week.

For a precise weather forecast during ETOC, check out the [Slovak Hydrometeorology Institute](#).

Clothing

There are no special regulations concerning the type of footwear or clothes in the terrain from the organisers, however it is recommended that you protect yourself against insects (mosquitoes, ticks) and weather (sun, rain).

It is mandatory to wear accreditation in a visible place during the competitions, for entry to castle Devin, for Team Official Meetings, etc.

Hazards

There is no known occurrence of dangerous animals. You can occasionally see typical fauna for this area (rabbits, roe deer, deer and wild boar).

Although there is only a low probability of trouble from insects in the spring season, we recommend protection against insect bites (mosquitoes, ticks).

There are rare occurrences of dangerous plants. As long as you do not pick up any dangerous mushrooms or plants like [fly agaric](#) or [death cap](#), the only potential hazard is an unpleasant sting from a [stinging nettle](#) when you step off the paths in some areas.

Start number bibs

Start number bibs shall be clearly visible from the front and worn on the chest or leg. Cutting, folding, or other adjustment of the start numbers is not allowed.

Start number bibs for the Model, and safety pins for the whole event, will be distributed in envelopes for each team at the registration office.

Start number bibs for each competition will be distributed at the relevant Team Official Meeting.

Punching

Times and answers will be measured/recorded by SPORTident (SI). Timed controls will be measured on tablets with the ANT application (developed by Libor Forst). The electronic punching system (SPORTident) for the answer from each task will be placed near each decision point.

The organisers will provide SI cards for all competitors. Only organisers' SI cards are valid for punching and must be returned after the Relay competition. Lost or unreturned SI card, cost 50€.

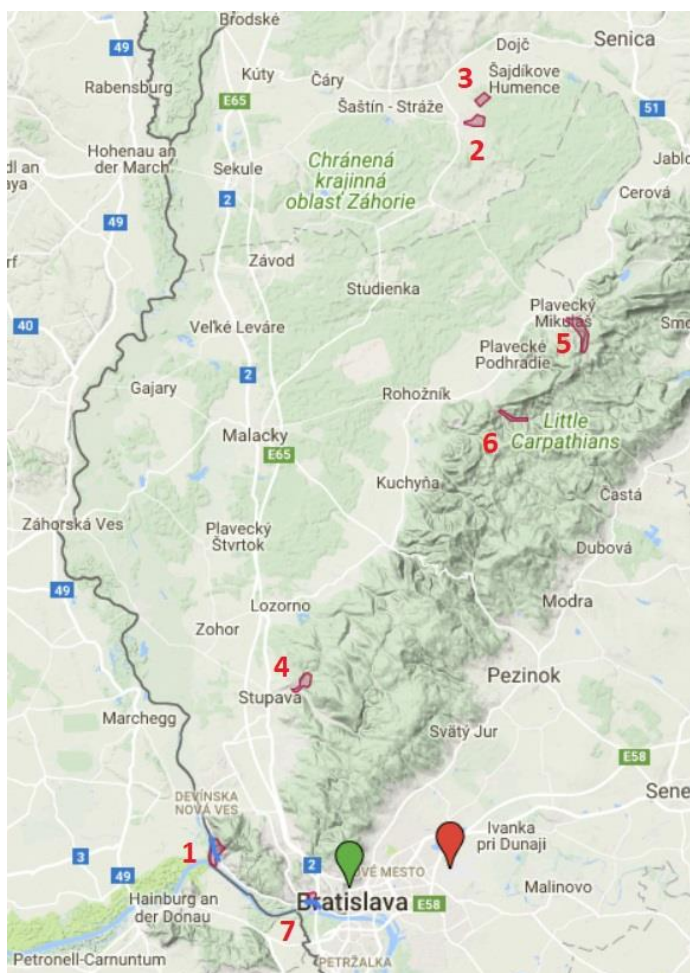
You can punch answers in free order in single sections of the course unless they are separated by start, finish or one-way.

Remember that it is not possible to correct your answer. No answer, or more than one (different) answer, is equal to an incorrect answer. Limited multiple punching of the same answer is allowed (unless you punch a different answer, or an answer on a different task), but remember that the SI card has a limited memory and at the end you might be missing some answers. The competitors are responsible for their correct punching.

The paper back-up cards will be distributed at TOMs (except Model). They have reduced size, and their use is mandatory only when SI fails (you will not hear beep and/or red light will not flash – confirmation of marking). Please use your safety pin from your start number bib.

The SI chips will be distributed for all events and for all accredited members in envelopes for each team at the registration office.

Embargoed areas



1. Devín
2. Borský Mikuláš
3. Borský Mikuláš II
4. Stupava
5. Kršlenica (Plavecký Mikuláš)
6. Sološnica – reserve terrain
7. Rovnice (Bratislava) – reserve terrain

Railway station

Airport

All embargoed areas are out of bounds for all potential ETOC 2018 team members (competitors, officials, escorts, etc.) and any other person who may influence the results of the competitions by any knowledge of the terrain. You can find more information about [embargoed areas](#) on the official website.

Each embargoed area will be released the day after the relevant competition or, with approval of organisers, directly after the relevant competition.

Ceremonies

The Opening Ceremony will be held a little unconventionally on Monday after the Relay competition. The programme will start at 15:00 on the upper court of castle Devín. There will be a performance of the Tostabur martial arts, which will present us with historical fencing, costumes, etc.

Award Ceremonies for all disciplines and categories will take in the Event Centres for the relevant discipline.

PreO on Sunday 28 April 2018 at 16:30

Relay on Monday 29 April 2018 at 15:30

TempO on Tuesday 30 April 2018 at 16:00

The top 6 athletes / teams are asked to assemble near the podium 10 minutes prior to the ceremony.

The Closing Ceremony & Banquet will be held at the Hotel Vienna House Easy Bratislava on Tuesday 1 May 2018 at 20:00.

Zero tolerance

Our goal is to prepare a fair and nice competition, so we would like to avoid any confusion about the correct placement of control flags. Our main concept is: "Competitors have to find the solution only by reading the map, bringing TrailO closer to real orienteering".

'Zero answers' general specification

The answer for any PreO or TempO task is 'zero' if none of the flags is in the position which is precisely defined by the centre of the circle and the control description (= the correct position).

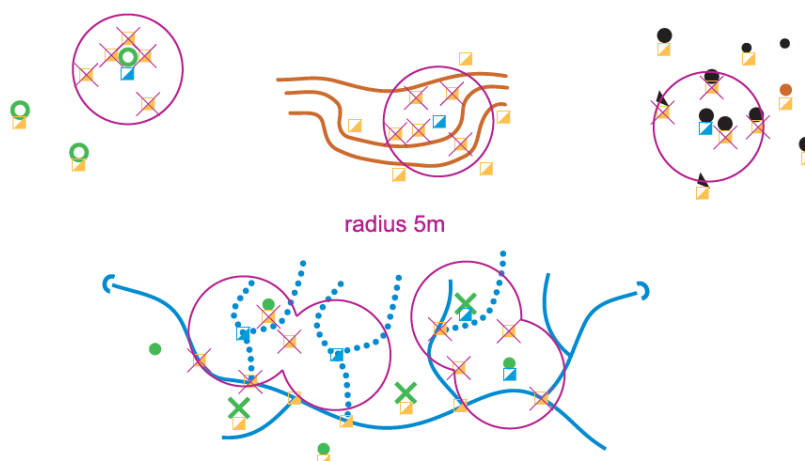
'Zero tolerance' specification at ETOC 2018

The distance between the correct position and the closest flag is always 5 or more metres.

If the flag is on the correct point object, there does not exist Zero answer for obvious reasons. We will always try to put flags in the exact position.

If the flag is on the correct area object or if the flag is on a different object, a Zero answer is possible only when the nearest flag is more than 5 metres away from the correct position.

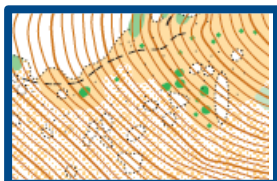
Close flags or correct positions can interfere, but the Zero answer is still possible only when the nearest flag is more than 5 metres away from correct position.



Terrain and maps

All maps are waterproof. The map size is A4 format, except for the Relay competition where A3 format is used.

PreO and Relay model – Plavecký Mikuláš (48.503920, 17.319361)



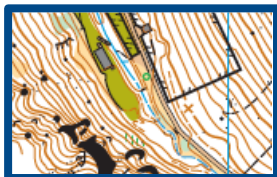
Map: Kršlenica, 1:4 000, e=2.5 m, ISSOM

Description: A typical karst valley with karst surface and high steep slopes. Territory largely covered by deciduous forest with beech, ash, maple and linden. 300 – 500 m above sea level.

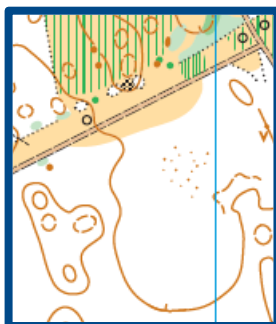
Activities: Never used for orienteering.

Old map: None

Event Centre: N/A, Plavecký Mikuláš (48.508678, 17.304517)



TempO model - Lakšárska Nová Ves (48.588879, 17.175586)



Map: Za dedinou, 1:4 000, e=2.5 m, ISSOM

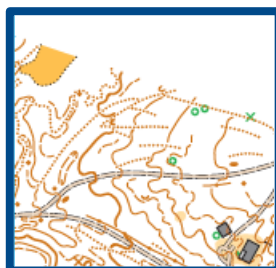
Description: A typical flat terrain for lowland Záhorie – pine forest with sand dunes. A forest path with mostly firm surface but in some places with sand surface. 200 – 250 m above sea level.

Activities: Last FootO competition in year 2010. Never used for TrailO

Old map: Pri čiernom piesku III <http://www.orienteering.sk/maps-new/jpg-gif/966.jpg>

Event Centre: Lakšárska Nová Ves municipal office (48.578685, 17.183530)

PreO Day 1 – Stupava (48.284018, 17.063934)



Map: Boleška, 1:4 000, e=2.5 m, ISSOM

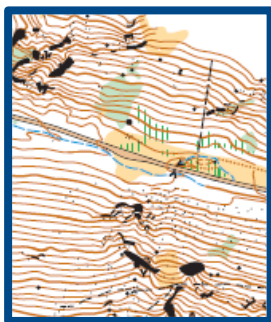
Description: A typical Little Carpathians hilly terrain covered by deciduous forests and parks with varied vegetation - mostly maintained grass areas and deciduous forest. 180 – 280 m above sea level.

Activities: Last FootO competition in year 1990 (2000). Never used for TrailO.

Old map: Greenpeace <http://www.orienteering.sk/maps-new/jpg-gif/73.jpg>

Event Centre: Stupava pension Intenzíva (48.279748, 17.048953)

PreO Day 2 – Plavecký Mikuláš (48.500573, 17.324855)



Map: Mokrá dolina, 1:4 000, e=2.5 m, ISSOM

Description: A typical karst valley with karst surface and high steep slopes. Territory largely covered by deciduous forest with beech, ash, maple and linden. 300 – 500 m above sea level.

Activities: Never used for orienteering.

Old map: None

Event Centre: Plavecký Mikuláš community centre (48.508785, 17.305434)

Relay – Devín (48.173663, 16.978794)



Map: Devínská hradná skala, 1:4 000, e=2.5 m, ISSOM

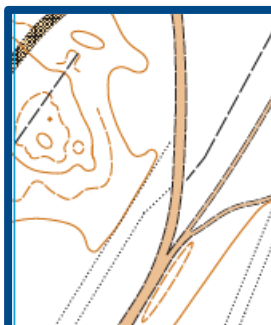
Description: Ancient ruins of castle Devín, located on a spectacular rocky cliff with archaeological excavations revealing marked ground plans of buildings, plus grassy hilly areas. 150 – 200 m above sea level.

Activities: Last FootO competition in year 2015. Never used for TrailO.

Old map: DEVÍN MMXV <http://www.orienteering.sk/maps-new/jpg-gif/1390.jpg>

Event Centre: Devín community centre (48.173326, 16.986264)

TempO Qualification – Borský Mikuláš (48.6414317, 17.2275847)



Map: Pri struhe, 1:4 000, e=2.5 m, ISSOM

Description: A typical flat terrain for lowland Záhorie – pine forest with sand dunes. A forest path with mostly firm surface but in some places with sand surface. 200 – 250 m above sea level.

Activities: Last FootO competition in year 2012. Never used for TrailO.

Old map: Tréning CESOM 2012 <http://www.orienteering.sk/maps-new/jpg-gif/1104.jpg>

Event Centre: Borský Mikuláš community centre (48.627956, 17.212832)

TempO Final – Borský Mikuláš (48.628111, 17.223697)



Map: Na humnisku, 1:4 000, e=2.5 m, ISSOM

Description: A typical flat terrain for lowland Záhorie – pine forest with sand dunes. A forest path with mostly firm surface but in some places with sand surface. 200 – 250 m above sea level.

Activities: Last FootO competition in year 2016. Last TrailO competition in year 2015.

Old map: Borský Mikuláš <http://www.orienteering.sk/maps-new/jpg-gif/1034.jpg>

Event Centre: Borský Mikuláš community centre (48.627956, 17.212832)

Reserve terrain – Sološnica (48.448669, 17.250037)



Map: Sološnická dolina, 1:4 000, e=2.5 m, ISSOM

Description: A typical Little Carpathians valley. Territory largely covered by deciduous forest with beech, ash, maple and linden. 300 – 500 m above sea level.

Activities: Never used for orienteering.

Old map: None

Event Centre: N/A

Solution maps

The solution maps for the Model event will be distributed in envelopes for each team at the registration office. It is a team decision how and when they use these maps.

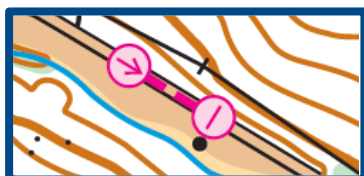
The solution maps for each competition will be distributed in envelopes for the whole team (accredited members + some reserve) at the day's Event Centre, only to the team member with the mark TOM on their accreditation.

The solution maps for public competitions and training will be distributed directly to participants.

Special procedures

There are some one-way sections in PreO model, PreO day 1 and Relay. They are marked on the map, in the control descriptions and in the terrain. They are relatively short and their main purpose is maintaining fairness for wheelchair competitors. It is permitted to stop, but it is forbidden to go back. The one-way procedure will be monitored by marshals, and violations can lead to disqualification.

Each one-way route can only be used once.



Example of one-way markings on the map.



Example of one-way markings in both directions. You use the section the first time, and return one-way only when you have solved all the tasks in the section in between.

We would like clarify procedures for the timed stations. This procedure is used in both PreO and TempO.

The control circle for each control is marked at the exact centre of the map segment. The map segment is oriented so that its vertical is at the mid-viewing angle between the A-flag and the furthestmost flag on the right. This angle is the same for all controls at the same timed-control station. The viewing point of the seated competitor is within the map segment but not marked on the map.

The competitors are held at a stop point some distance away, from which they cannot see the control terrain and flags.

As the competitor comes into the shelter the control card is handed over. The competitor's details (name and number) are entered into the record. The marshals stand in front of the chair to block the view of the terrain and flags while the competitor settles.

Once settled, the competitor is handed the set of maps with a cover sheet. The competitors should choose from bound or loose version of maps, and confirm the way of answering (speaking or pointing).

The competitor is given a set of maps in order. You can verify that the order is correct by seeing all the numbers on the right-hand side. It is essential for us that the maps have prominent sequence numbering that can be checked by the officials before being handed to the competitor and by the competitor before timing starts. If you see a crossed check box instead of a number, immediately inform the marshal about this situation and wait while the problem is resolved.

Then the competitor is introduced to the terrain with a standard routine. The officials step aside and one of them points out all the flags: Alfa, Bravo, Charlie, Delta, Echo, Foxtrot.

Please be prepared to answer immediately (do not delay by preparing glasses, magnifier, compass, etc.) due to the very short start-time interval. We would like to provide the same conditions for everybody. Competitors are not allowed to slow this process by saying they cannot see one of the flags. Sometimes flags can be difficult to see quickly and easily (shadow, flags at very different heights or distances, etc). In these cases, the official will add additional information to precisely indicate flag positions to competitors, such as "far away", "beside ...", "behind ...". Equally the competitors are not allowed to speed this process by saying they see all the flags without them being pointed out. The pointing procedure is a ritual to give the same viewing time for each competitor.

Immediately following the pointing out of the last flag, the official invites the competitor to view the maps with the words "the time starts now".

The competitor shall speak clearly the answers for the tasks using the following words: Alfa, Bravo, Charlie, Delta, Echo, Foxtrot, and Zero (only in TempO), or point your answers on the letters that are situated in front of the competitor's chair.

The competitor considers the problem on the first map and gives an answer. This answer is repeated by the recorder and entered into the records. Without delay the competitor considers the problem on the second map and gives an answer, which is repeated and recorded. In like manner, the competitor continues to the last map and with the final answer, the timing stops.

Competitors must follow the map order and deal with each map without reference to earlier or later maps. When competitors skip a map for some reason, the referee records the answer with letter X (incorrect) for this map, but will record the answer for the current map. It is not permitted to return to the previous map. Your answer will be recorded with X for both maps if this happens.

Times are measured using two timing devices (ANT and manually). Officials record the competitor's answers on the list and on the competition card. The competitor can check the answers and time on the list before leaving the station.

The competitor has to clear the SI card before the start of competition by putting the SI card into the SI box with name 'CLEAR', and verify it by putting the SI card into the SI box with name 'CHECK'. It is mandatory to punch the start and finish for each part of the course by SI card. There are two mandatory SI read-outs (two separate systems) after each finish.

The competitor can use backup SPORTident boxes for start and finish procedures in case of failure.

The competitors can be disqualified in the absence of any procedure.

Complaints and Protests

Complaints may only be made by team officials or competitors. Any complaint shall be made in writing to the organiser as soon as possible, but no later than 30 minutes after the solution sheets have been distributed. The start of the last 30-minute period will be announced. The complainant shall be informed about the decision immediately. There is no fee for a complaint.

A protest may be made against the organiser's decision about a complaint. Protests may only be made by team officials or competitors. Any protest shall be made in writing to the organiser no later than 15 minutes after the organiser has informed the complainant of the decision about the complaint. Protests received after this time limit may be considered at the discretion of the jury if there are valid exceptional circumstances which must be explained in the protest.

Organiser will accept extra time (15 minutes) for protest writing if it was requested during the official first 15 minutes.

A protest fee of 50 EUR shall be paid to the IOF Senior Event Adviser in cash when making a protest. The fee will be returned if the protest is accepted by the jury, otherwise the fee shall be sent to the IOF. Where a protest is signed by more than one Federation, each of these Federations will pay the protest fee.

Jury

Hannu Niemi, FIN, Chairman

Atis Ruksans, LAT

Eva Fredholm, SWE

Quarantine

The organisers will provide refreshment (water, mineral water, etc.) in each quarantine. There are places for warm-up, sitting and a sheltered area. The toilets for mobile and immobile competitors will be available in each quarantine.

It is strictly forbidden to use telecommunication or any electronic equipment.

Competitors will be called up by marshals at their start times.

Equipment

During the competition the navigational aids that competitors may use are only the map and control descriptions provided by the organiser, and a compass.

No mechanical or electronic aids, other than an odometer and a watch are allowed. A magnifying glass either incorporated in the compass or separate is allowed. Binoculars and telescopes are prohibited.

Telecommunication equipment may not be used in the competition area, except in an emergency by marshals. Any other use of telecommunication equipment during the competition period may result in disqualification of the competitor and team.

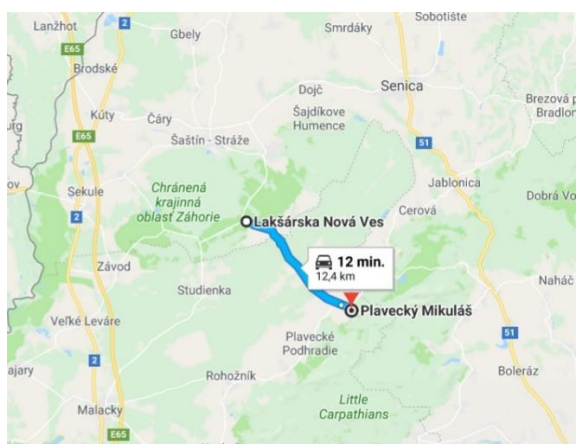
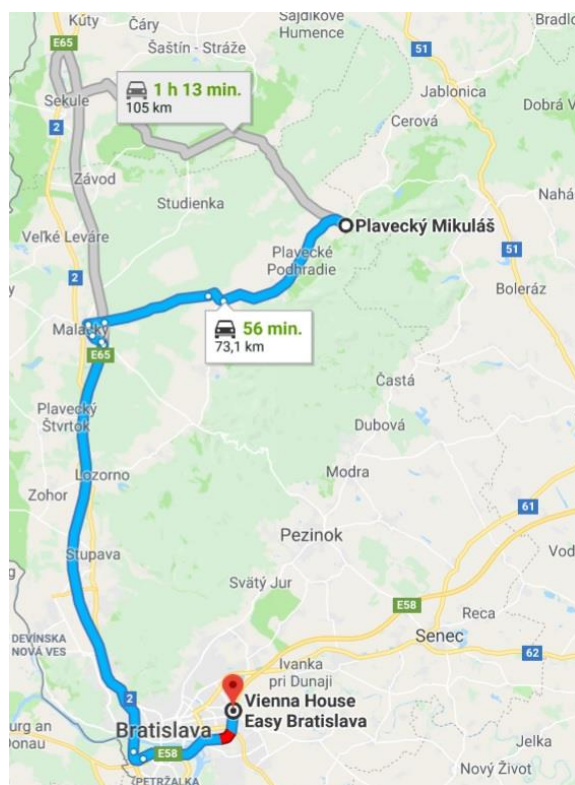
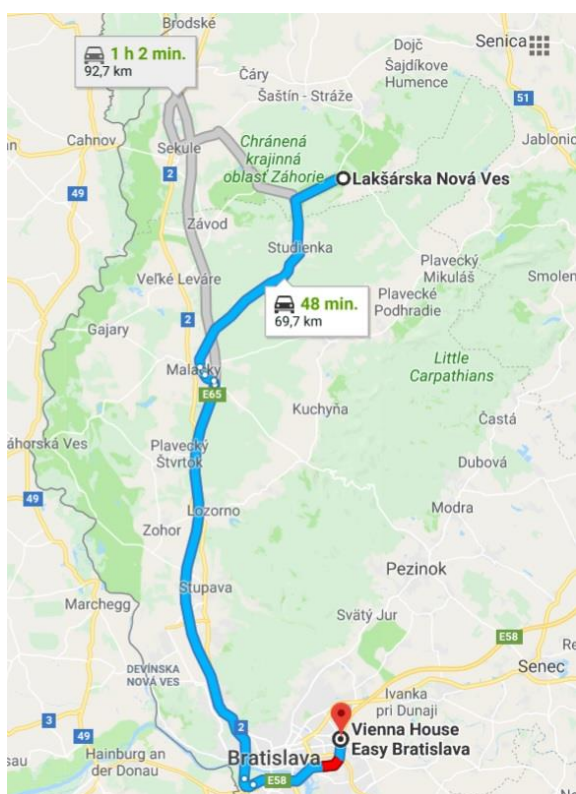
It is permitted to use telecommunication or any electronic equipment during the Model.

Model first part (Friday, April 27)

We would like to inform you that model maps (PreO, Relay), solution maps (PreO, Relay and TempO), bibs for model, pins for bibs, paper cards and SI cards (for all accredited – not only for competitors) will be distributed in team envelopes (solutions separately) in packages at the Event Centre office. You can register in the main Event Centre office in hotel Vienna House Easy Bratislava (48.162455, 17.182045) on Thursday, or in the temporary Event Centre in Lakšárska Nová Ves (48.578637, 17.183199) on Friday before the models. The organiser will provide only a very limited number of maps at the starting point of the PreO model.

Event Centre: there is no Event Centre in the village Plavecký Mikuláš, only places for parking. The Event Centre is in the community centre in the village Lakšárska Nová Ves.

Coordinates: 48.508678, 17.304517



Start: 11:00

We kindly ask federations to keep to this suggested schedule for Model participation:

11:00 - 12:00 RUS, CRO, UKR, GER

12:00 - 13:00 HUN, LAT, LIT, SLO

13:00 - 14:00 FIN, GBR, ITA, JPN

14:00 - 15:00 CZE, DEN, SVK, POL

15:00 - 16:00 NOR, SWE, POR, ESP

Distances:

Parking – Relay part: 0 – 250 m

Relay part – Start: 950 m

Finish – Parking: 1500 m

Quarantine: none



Course:

Event	Length	Control points	TCs	Accessibility	Climbing
Model PreO	0.2 km	9	1 x 3	asphalt road	moderate

The course has three parts on one map. The Relay part is not measured and consists of only one task near the parking place, to illustrate some long-distance tasks in the Relay competition. A large flat flag with size 1.2 x 1.2 metres will be placed in the terrain. There is a bit of an angle view of the control. The visibility will be better on competition day, due to a more perceptible view of the tasks. It can be solved at the beginning or end of the model. There is some additional visibility on the way to the PreO part.

You can use satellite map in left corner for navigation to start.

The measured course has a length of 230 metres (climb 12 m) and 9 controls. The first part has length 180 metres with 5 controls focused on Relay and PreO 1 terrain. We will demonstrate one-way procedure in this part. The second part has length 50 metres with 4 controls and it is focused more on PreO 2 terrain. The controls can be visited in free order but it is necessary to keep to one-way routes, so there are some controls where it is not possible solve in free order (1 CP must be solved before the one-way, 2-5 CPs can be solved in free order before Finish 1, 6-9 CPs solved in free order in the last section).

It is necessary to punch start and finish for each part by SPORTident. The SI read-out is on the way to parking (near to Start 1). Clear and check procedures will be accessible before the first start.

Time limit: E-Open 36 minutes, E-Para 41 minutes. The limit is defined for all parts together. Moving between these parts (330 m) is not counted in the limit.

Timed control: after the course. There is one time station with 3 tasks and 6 flags for each category. The limit for the timed control is 90 seconds. The penalty for each incorrect answer is 60 seconds. The timed controls are without a zero control.

Results: Online results in Event Centre or on Internet on page <https://preoresultat.se/> .

Toilets: Toilets are available in the first part, in the old stone quarry next to the road.

Model second part (Friday, April 27)

Event Centre: community centre in village Lakšárska Nová Ves

Coordinates: 48.578637, 17.183199

Start: available from 12:00, according to the order after the Model first part

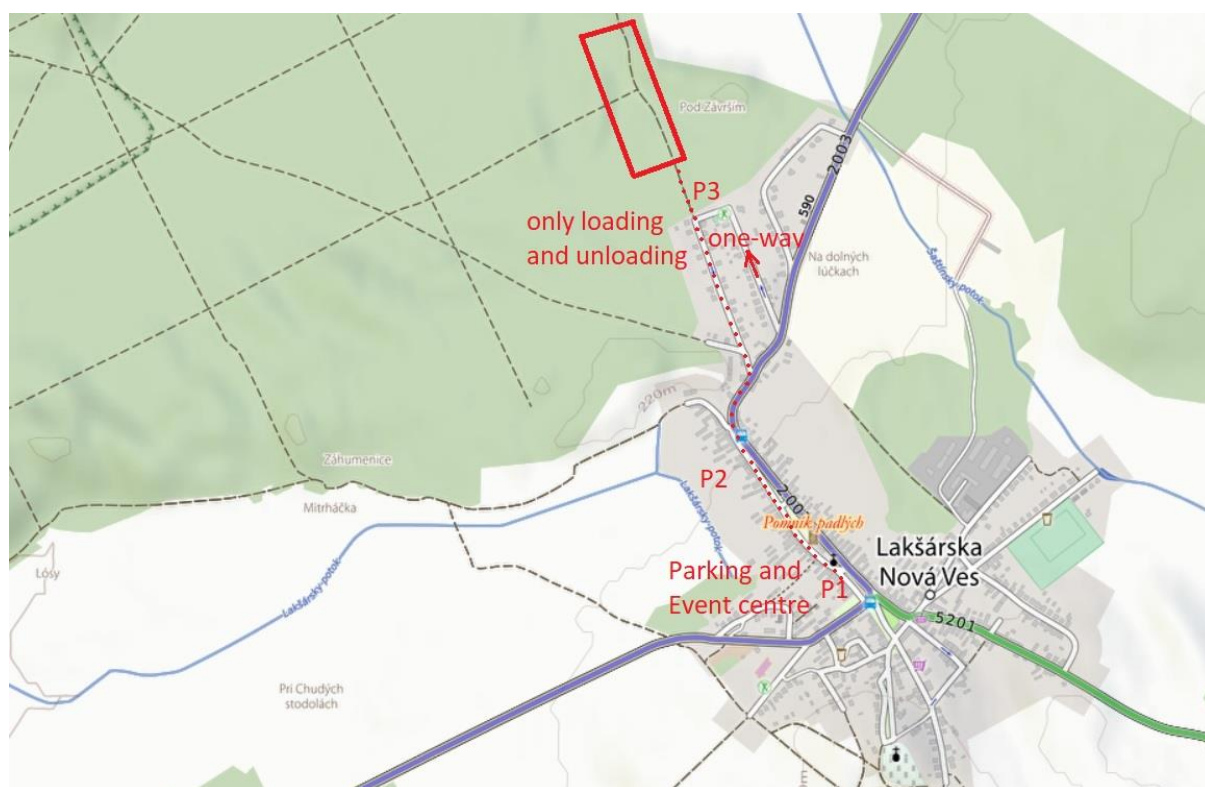
Distances:

Parking – Start: 900m

Finish – Parking: 1100m

There is very limited space (about 3-4 cars) for wheelchair competitors parking close to the start. Please use this place mainly for loading and unloading.

Quarantine: none



Course:

Event	Length	Control points	TCs	Accessibility	Climbing
TempO Model	0.2 km		3 x 5	forest or forest path with sand surface*	minimal

* The critical parts will be covered by carpets or linoleum

The course has a length of 200 metres (climb 3 m).

There are two tents (red and blue) at each station, to simulate TempO Qualification. We plan to use only red tents. The blue ones will be used for self-service or to solve problems with queues.

Marking of course: The course will be marked by red and white strips or by directional arrows.

Timed controls: There are three time stations with 5 tasks and 6 flags for each category. The time limit for the timed control is 150 seconds. The penalty for each incorrect answer is 30 seconds. The time controls can contain zero control.

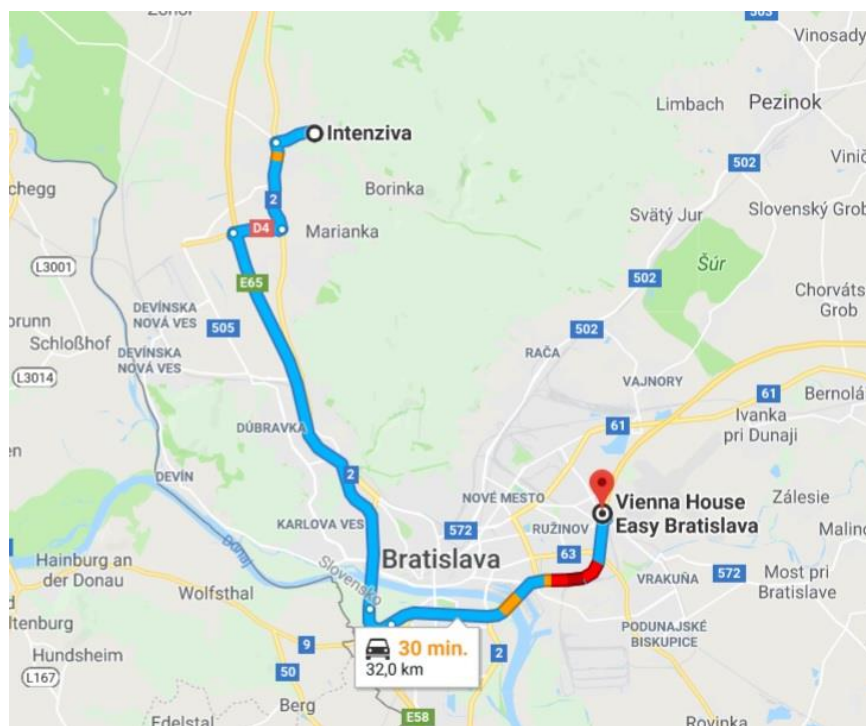
Results: Online results in Event Centre or on Internet on page <https://preoresultat.se/>.

Toilets: Toilets are available near the start.

PreO day 1 (Saturday, April 28)

Event Centre: pension Intenzíva in town Stupava.

Coordinates: 48.279748, 17.048953



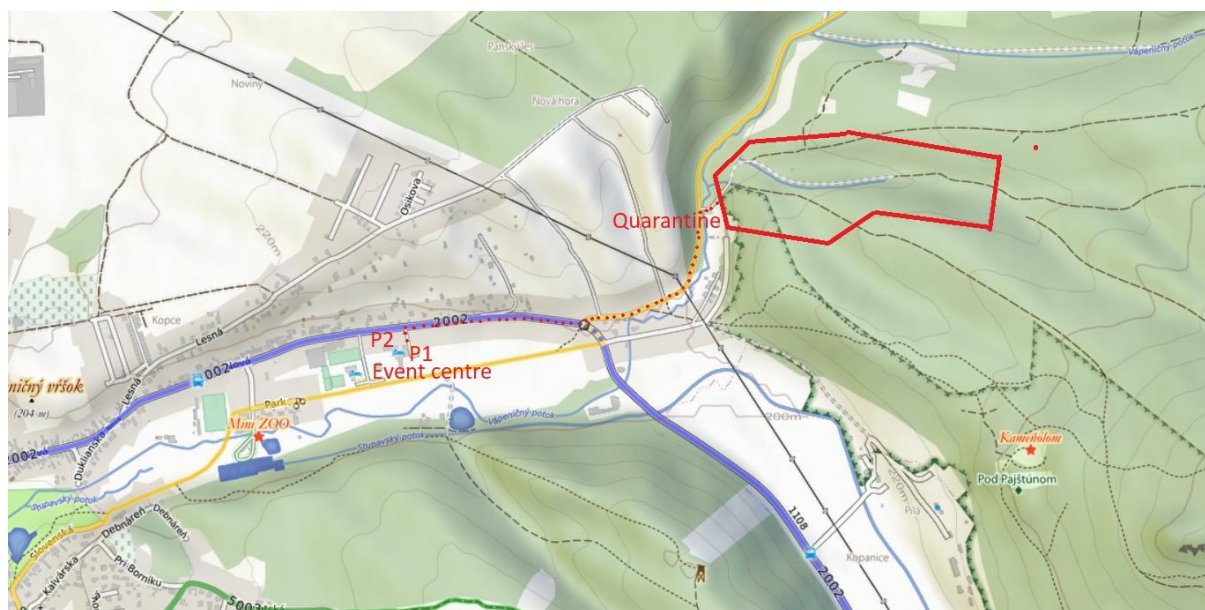
Start: 10:00

Distances:

Parking – Start / Quarantine: 1200 m

Finish – Quarantine: 350 m

Quarantine: before the start, competitors shall be present in quarantine before 11:30. The competitors who finish the course before 11:30 have to wait near the Finish until the quarantine closes. The competitors will be transported to the Start/Quarantine area by two minibuses (one with capacity 8 people for Open category or Para walking competitors, the second with capacity 4+2 for wheelchair competitors).



Course:

Event	Length	Control points	TCs	Accessibility	Climbing
PreO Day 1	0.9 km	24	2 x 3	very good forest paths*	moderate

* The critical parts will be covered by carpets or linoleum

The course has two parts on one map. The course has a length of 900 metres (climb 30 m) and 24 controls. The first part has length 750 metres with 19 controls. The second part has length 150 meters with 5 controls. The controls can be visited in free order in each section (1–8 CPs before first one-way, 9-10 CPs before second one-way, 11-19 CPs before Finish 1, 20-24 CPs in last section).

The transition to the second part is over a road that it is forbidden to cross during the first part. Access to this section will be managed by marshals.

It is necessary to punch start and finish for each part by SPORTident. The two mandatory SI read-outs (two separate systems) will be after each finish. Clear and check procedures are before the first start and they are mandatory too.

Time limit: E-Open 99 minutes, E-Para 114 minutes. The limit is defined for all parts together. Moving between these parts (250 m) is not counted in the limit.

Timed controls: after the first part of the course. There are two timed stations with 3 tasks and 6 flags for each category. The time limit for the timed control is 90 seconds. The penalty for each incorrect answer is 60 seconds. The timed controls are without a zero control.

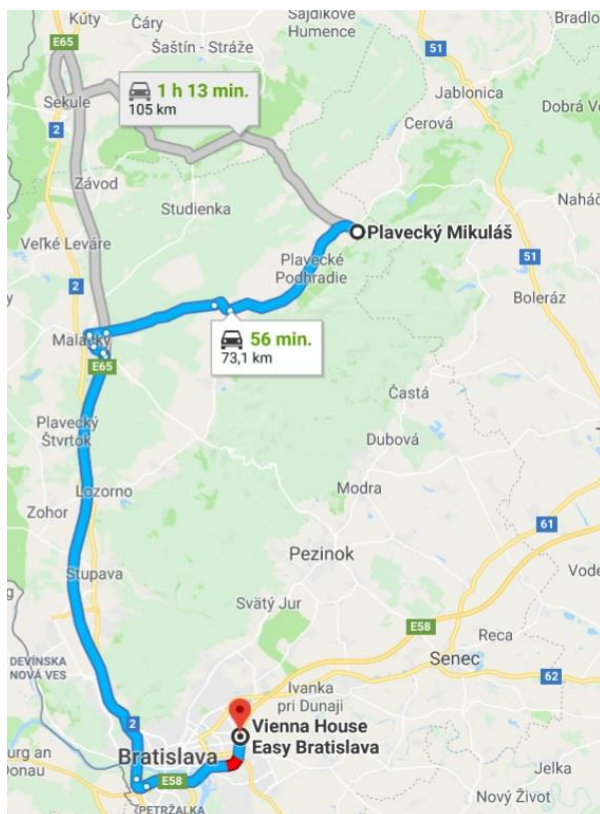
Results: Online results in Event Centre or on Internet on page <https://preoresultat.se/> .

Toilets: Toilets are available in Quarantine and in the Event Centre.

PreO day 2 (Sunday, April 29)

Event Centre: community centre in village Plavecký Mikuláš.

Coordinates: 48.508785, 17.305434



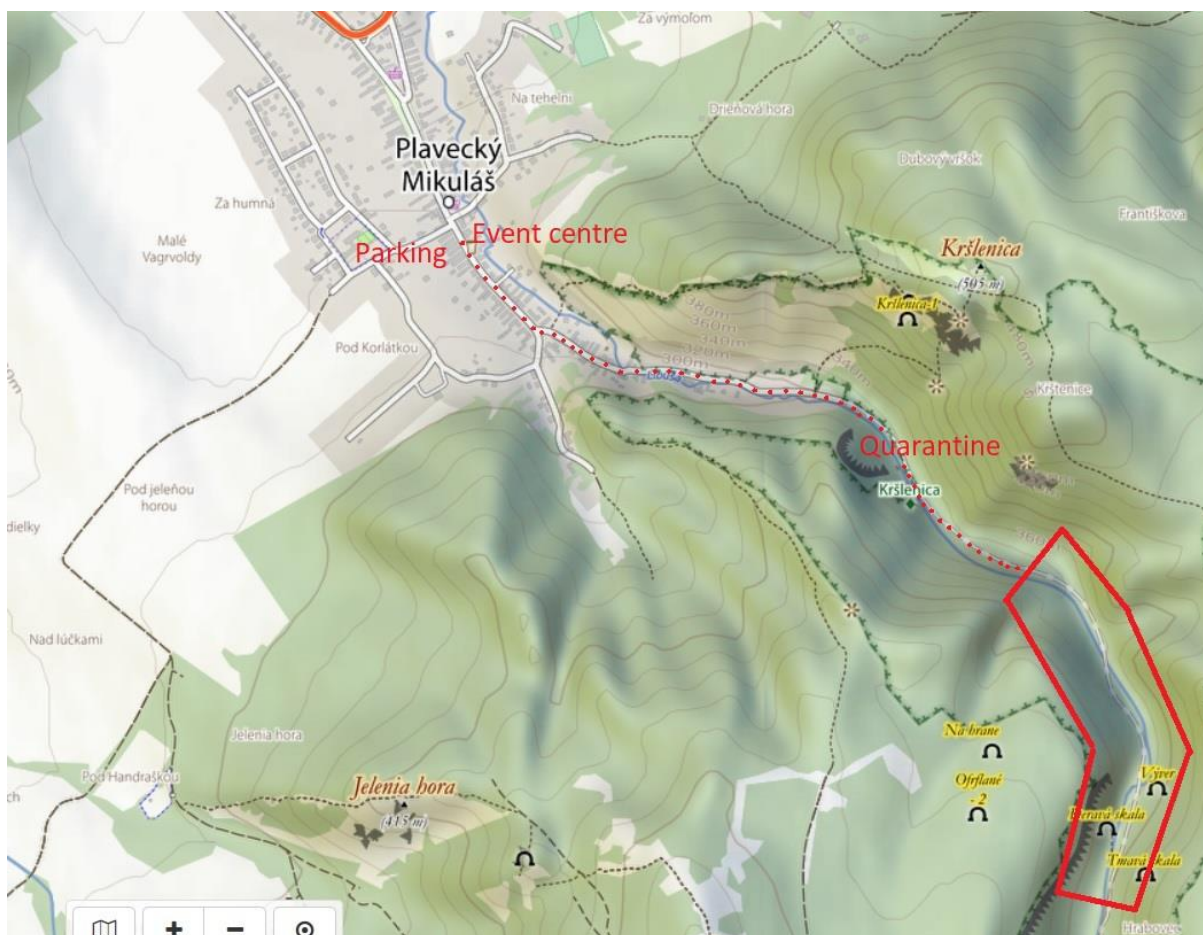
Start: 10:00

Distances:

Parking – Quarantine: 1200 m

Quarantine – Start1/Finish2: 280 m

Quarantine: before the start, competitors shall be present in quarantine before 12:00. The competitors who finish the course before 12:00 have to wait near the Finish until the quarantine closes. The competitors will be transported to the Quarantine area by two minibuses (one with capacity 8 people for Open category or Para walking competitors, second with capacity 4+2 for wheelchair competitors).



Course:

Event	Length	Control points	TCs	Accessibility	Climbing
PreO Day 2	1.7 km	28	2 x 3	asphalt road	increased

The course has two parts on two maps. The course has a length of 1700 metres (climb 55 m) and 28 controls. The first part has length 850 metres with 17 controls. The second part has length 850 metres with 11 controls. The controls can be visited in free order in each section (1–17 CPs on first map, 18–28 CPs on second map). We will take maps from competitors after the first part.

It is necessary to punch the start and finish for each part by SPORTident. The two mandatory SI read-outs (two separate systems) will be after each finish. Clear and check procedures are before the first start and they are mandatory too.

Time limit: E-Open 135 minutes, E-Para 150 minutes. The limit is defined for all parts together. Moving between these parts (350 m) is not counted in the limit.

Timed controls: after the first part of the course. There are two timed stations with 3 tasks and 6 flags for each category. The time limit for the timed control is 90 seconds. The penalty for each incorrect answer is 60 seconds. The timed controls are without zero control.

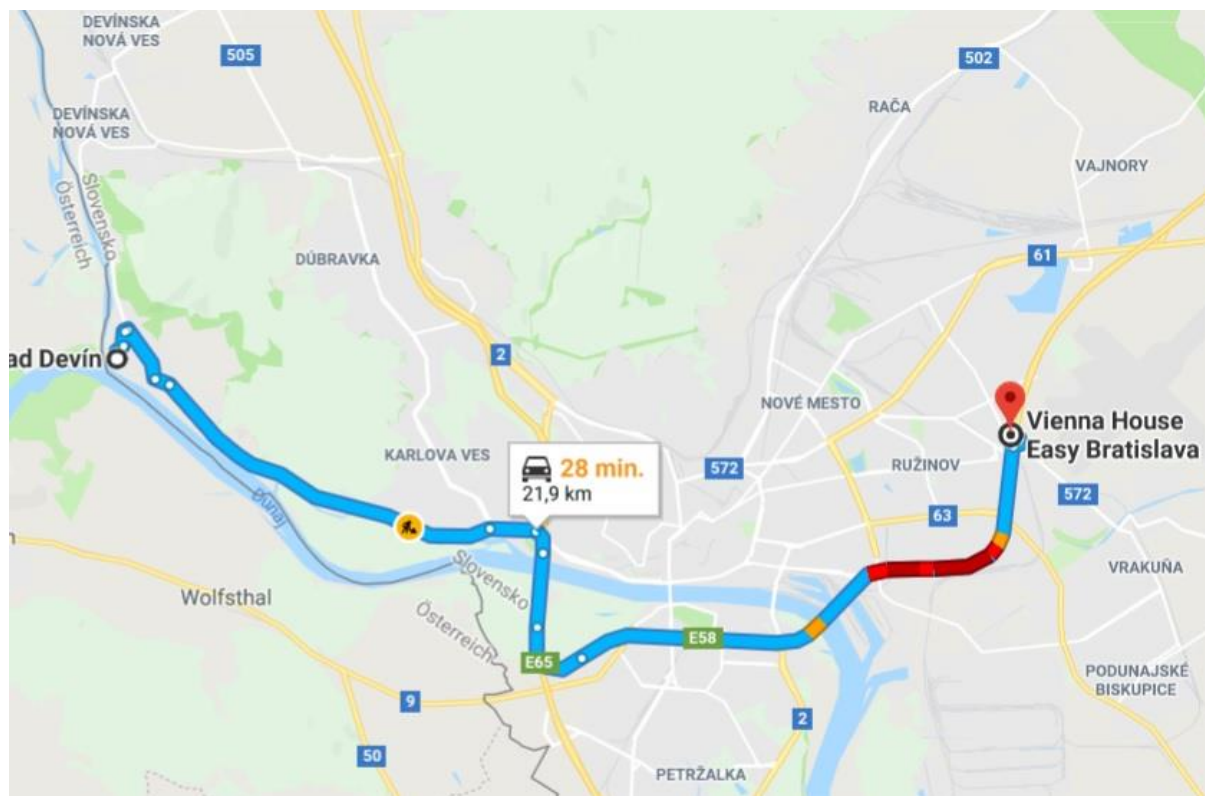
Results: Online results in Event Centre or on Internet on page <https://preoresultat.se/>.

Toilets: Toilets are available in Quarantine and in the Event centre.

Relay (Monday, April 30)

Event Centre: community centre in Devín (48.173326, 16.986264). We had to change the Event Centre from hotel Hradná Brána because of a new owner and planned reconstruction during ETOC.

Coordinates: 48.175291, 16.979039 (Parking)



Start: 10:00

Distances:

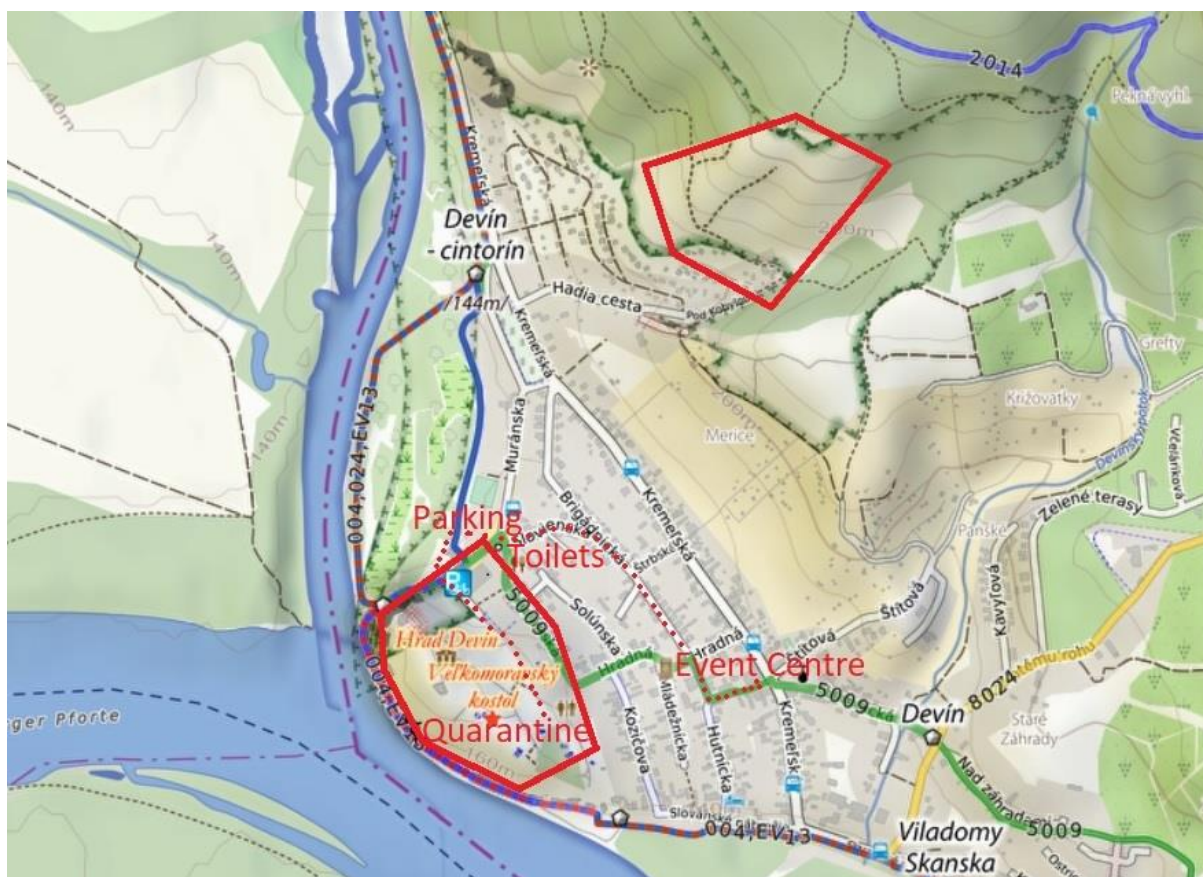
Parking – Quarantine: 500 m

Parking – Event Centre: 750 m

Quarantine – Event Centre: 1250 m

Quarantine – Start: 100 m

Quarantine: before the start, competitors shall be present in quarantine before 9:00.



Course:

Event	Length	Control points	TCs	Accessibility	Climbing
Relay	0.8 km	3 x 12	2 x 4	paved or asphalt paths	moderate

The course has 800 metres for each leg (climb 25 m) and 12 controls for each leg. The controls can be visited in free order in each section (sections are 1–5 CPs before first one-way, 6-11 CPs before last one-way, 12 CPs in last section before Finish).

The three long distance tasks will use large flat flags with size 1.2 x 1.2 metres.

We will take maps from competitors after the finish.

The SI clear and check procedures are before the start. The SI start boxes are not used for any competitors. It is mandatory to punch the finish by SI card. The two SI read-outs (two separate systems) will be after the finish and their using is mandatory too.

Time limit: E-Open 180 minutes (3 x 60 minutes), E-Para 210 minutes (3 x 70 minutes). The limit is defined for all legs together.

Timed controls: after the finish. There are two timed stations with 4 tasks and 6 flags for each category and the same for all legs. The time limit for the timed control is 120 seconds. The penalty for each incorrect answer is 30 seconds. These timed controls can contain zero controls.

The competitors will have a colour written on their bibs. They must visit the tents with the same colour for their timed controls.

The competitors from the first two legs are forbidden to return to the castle area after completion of all their timed stations, until the end of the competition.

They can return to the Event Centre, or feel free to go sightseeing around Devin castle. It is a national monument, so please do not walk outside dedicated paths.

The last timed station for third-leg competitors will be public. Third-leg competitors will return to quarantine after the PreO part. The Tempo part for third legs begins after all competitors end the PreO part, and the results have been recalculated. The PARA category starts first at the timed stations, followed by the OPEN category. The competitors will start in reverse order (best relay team will start last).

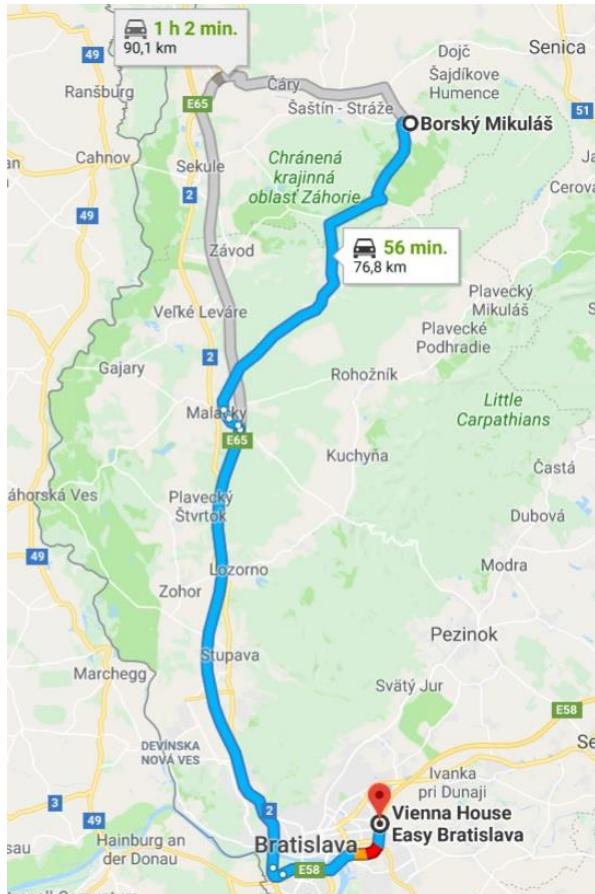
Results: Online results in Event Centre or on Internet on page <https://preoresultat.se/> .

Toilets: Toilets are available in the quarantine and east of the parking area.

TempO (Tuesday, May 1)

Event Centre: community centre in village Borský Mikuláš.

Coordinates: 48.627956, 17.212832



Start: 9:00 – TempO Qualification

Distances:

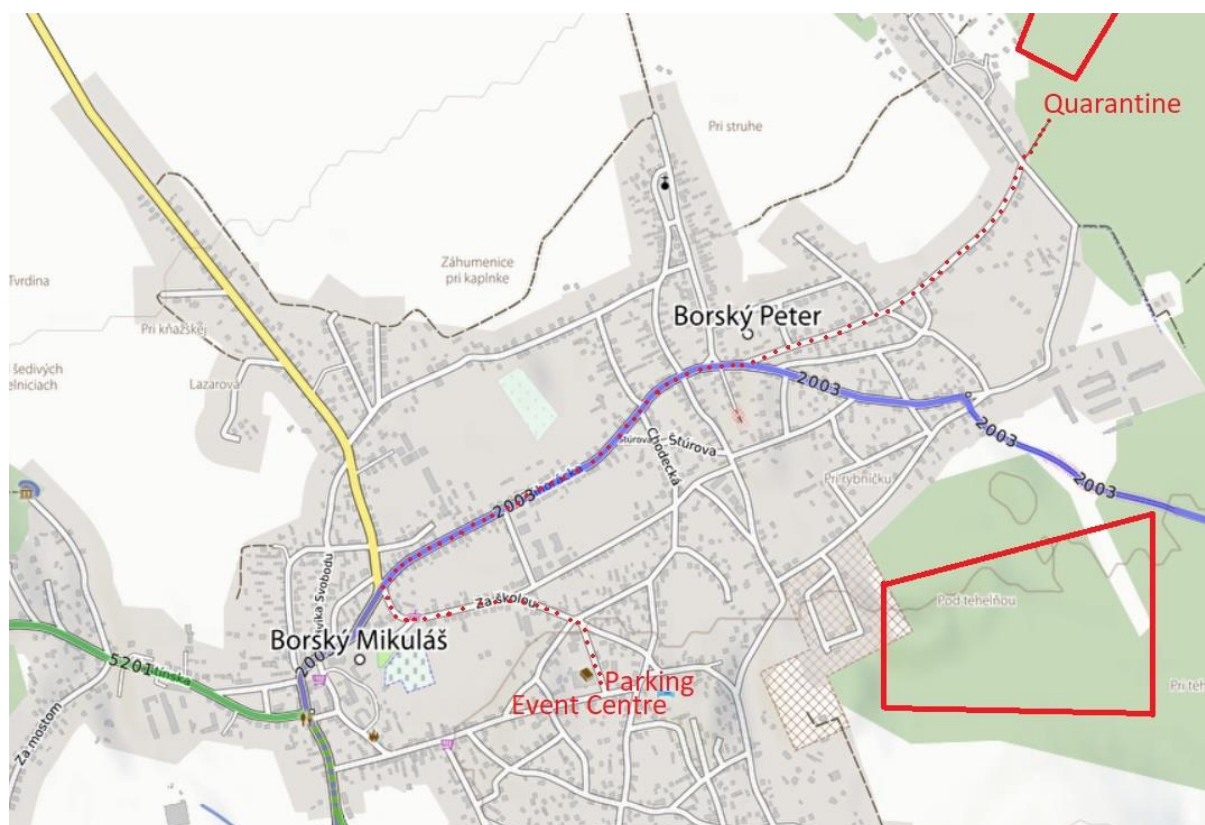
Parking – Event Centre: 50 m

Parking – Qualification Quarantine: 1900 m

Qualification Quarantine - Start: 250 m

Finish – Qualification Quarantine: 700 m

Quarantine: before the start, competitors shall be present in quarantine before 9:30. The competitors will be transported to the Quarantine area by two minibuses (one with capacity 8 people for Open category or Para walking competitors, second with capacity 4+2 for wheelchair competitors).



Course:

Event	Length	Control points	TCs	Accessibility	Climbing
TempO Qualification	1.2 km		6 x 5	forest or forest path with sand surface*	minimal

* The critical parts will be covered by carpets or linoleum

The course has a length of 1200 metres (climb 10 m). There are six timed stations, each with 5 tasks and 6 flags. The time limit for the timed station is 150 seconds. The penalty for each incorrect answer is 30 seconds. The timed controls can contain zero answers.

There are two tents (red and blue) at each station, for Heat A (red tents on left side) and Heat B (blue tents on right side). The competitors with red number bibs go to the red tents. The competitors with blue number bibs go to the blue tents.

Marking of course: will be marked by red and white strips or by directional arrows.

Results: Online results in Event Centre or on Internet on page <https://preoresultat.se/>.

Toilets: Toilets are available in Quarantine and in the Event Centre.

The competitors placed number 18 and better in each qualification race heat may compete in the final. If some non-European competitors are among them they can compete in the final, and the number of competitors in the final will be increased so that the best 18 European competitors from each heat may compete in final.

Start: 14:00 – TempO Final

Distances:

Event Centre - Final Quarantine: 50 m

Final Quarantine – Start: 1000 m

Finish – Event Centre: 1100 m

Quarantine: before the start, competitors shall be present in quarantine before 13:30.

Course:

Event	Length	Control points	TCs	Accessibility	Climbing
TempO Final	1.1 km		7 x 5	forest or forest path with sand surface*	minimal

* The critical parts will be covered by carpets or linoleum

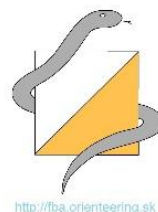
The course has a length of 1100 metres (climb 10 m). There are seven timed stations, each with 5 tasks and 6 flags. The time limit for the timed station is 150 seconds. The penalty for each incorrect answer is 30 seconds. The timed controls can contain zero answers.

Marking of course: will be marked by red and white strips or by directional arrows.

Results: Online results in Event Centre or on Internet on page <https://preoresultat.se/> .

Toilets: Toilets are available in Quarantine and in the Event Centre.

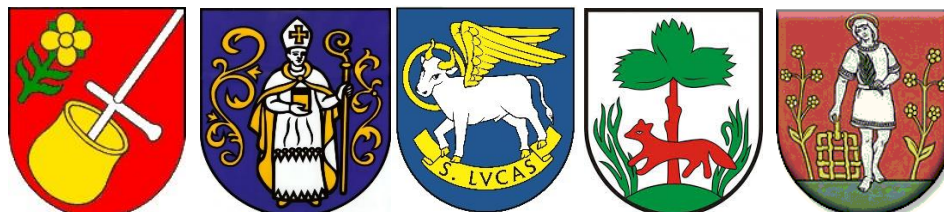
Organisers



Sponsors



Partners



TJ Slávia Farmaceut
ul. Odbojárov 10
832 32 Bratislava
Slovak republic

